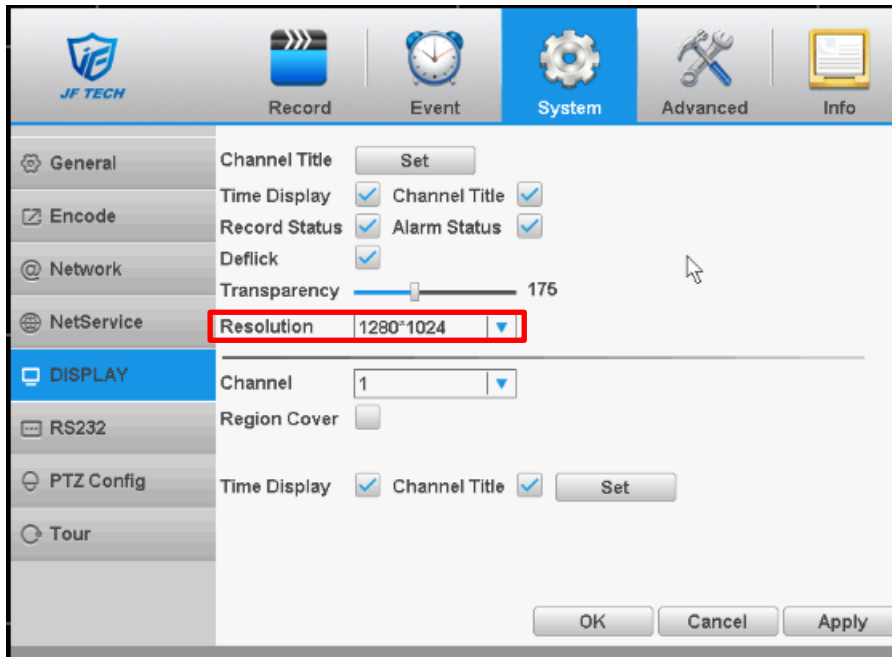


The problem of biased screen or the display of image is not full

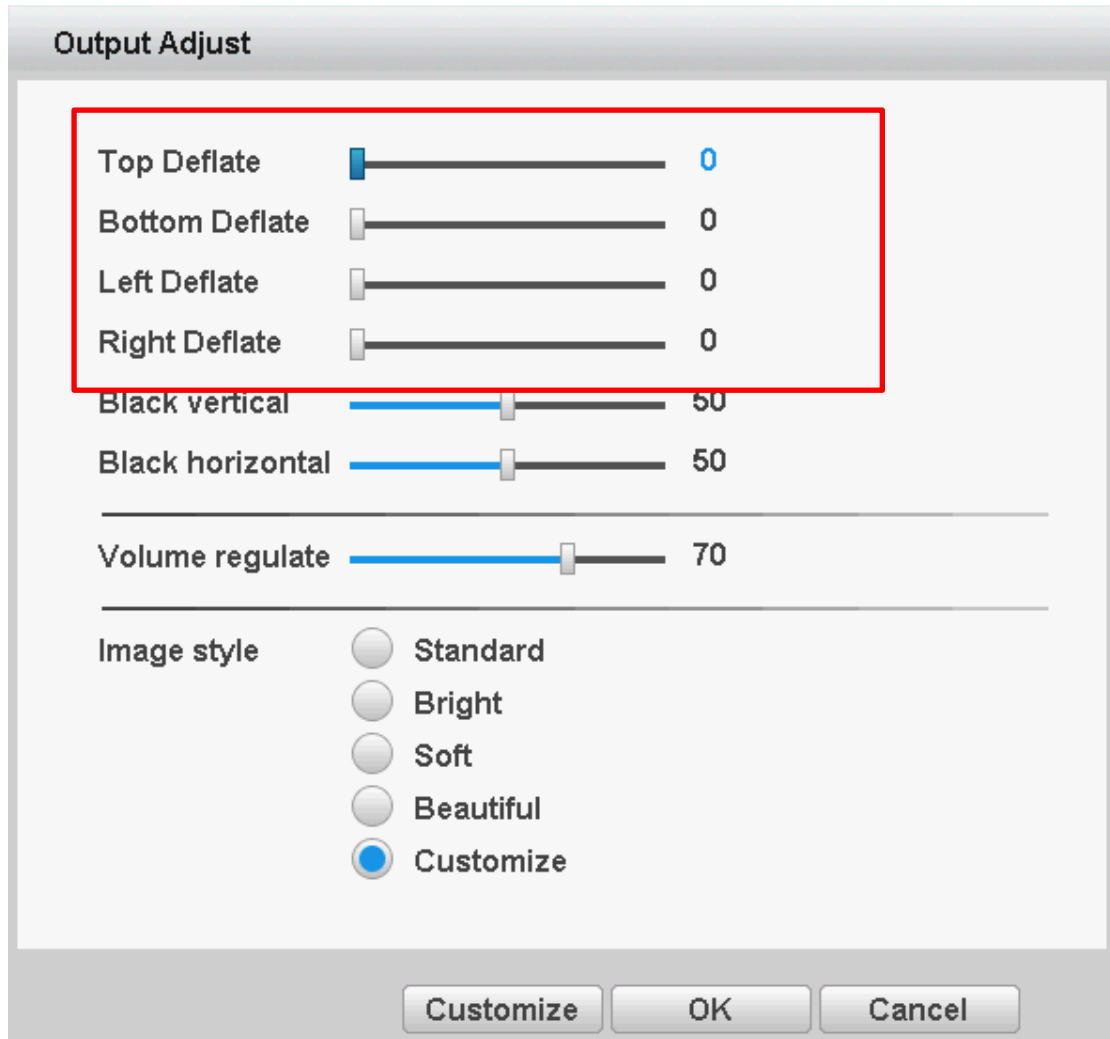
What can you when happens the problem of biased screen or the display of image is not full on the local display.

1. Go to main menu -> system -> Display to adjust the Resolution and output priority option



2. Right click, and click Output Adjust. Then adjust the deflates.

JF TECH



3. On the display, there is adaptive adjustment button. You can try to adjust it.
4. Upgrade the firmware for the DVR. Or try to restore the DVR in Advanced -> Restore.



5. Some old monitors can not support 1080P resolution, so the screen is biased screen. Please

try to replace the display in this case.



JF TECH