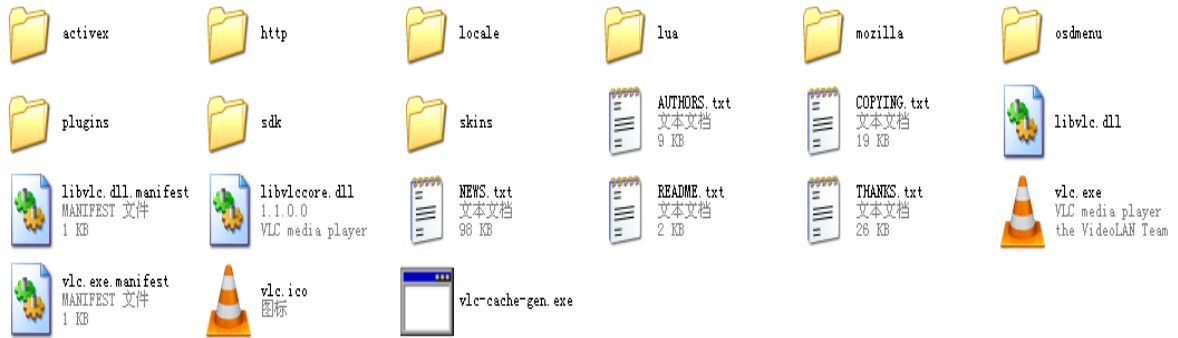


Handling Instruction Of RTSP

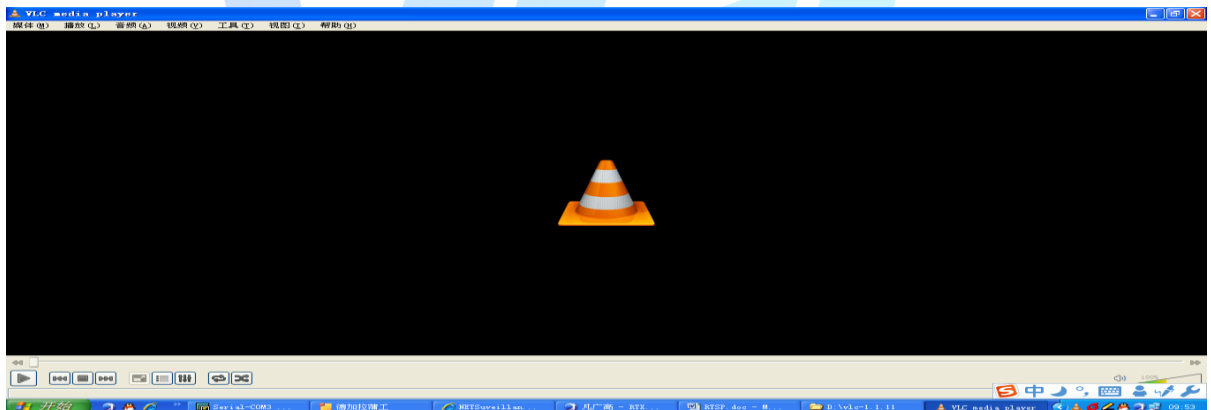
Only program of R09 can support RTSP function at present.

1. Install VLC Media Player.

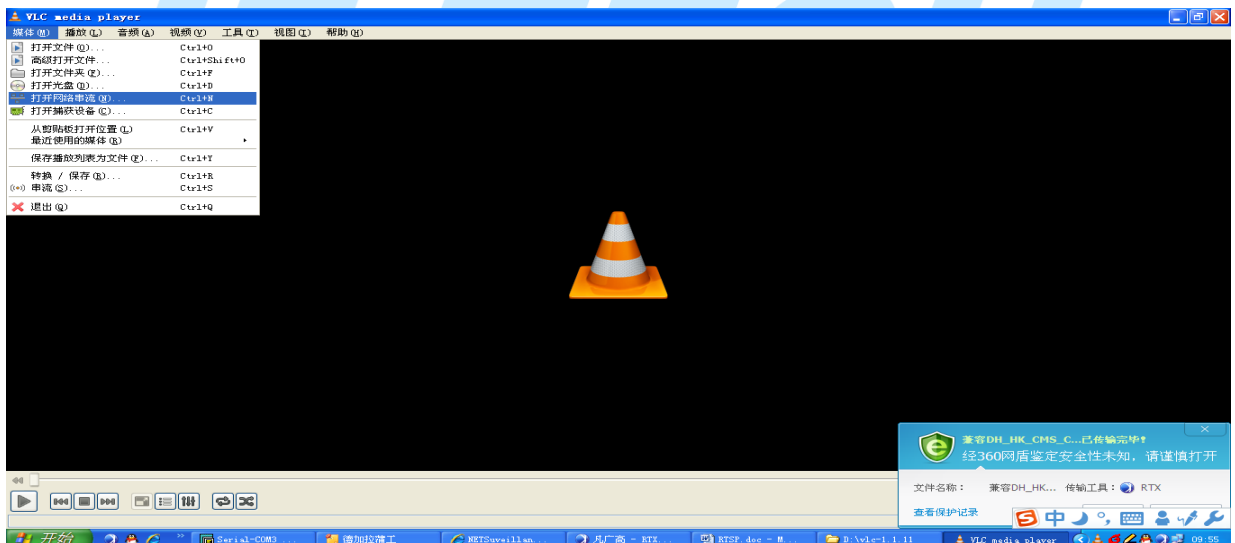


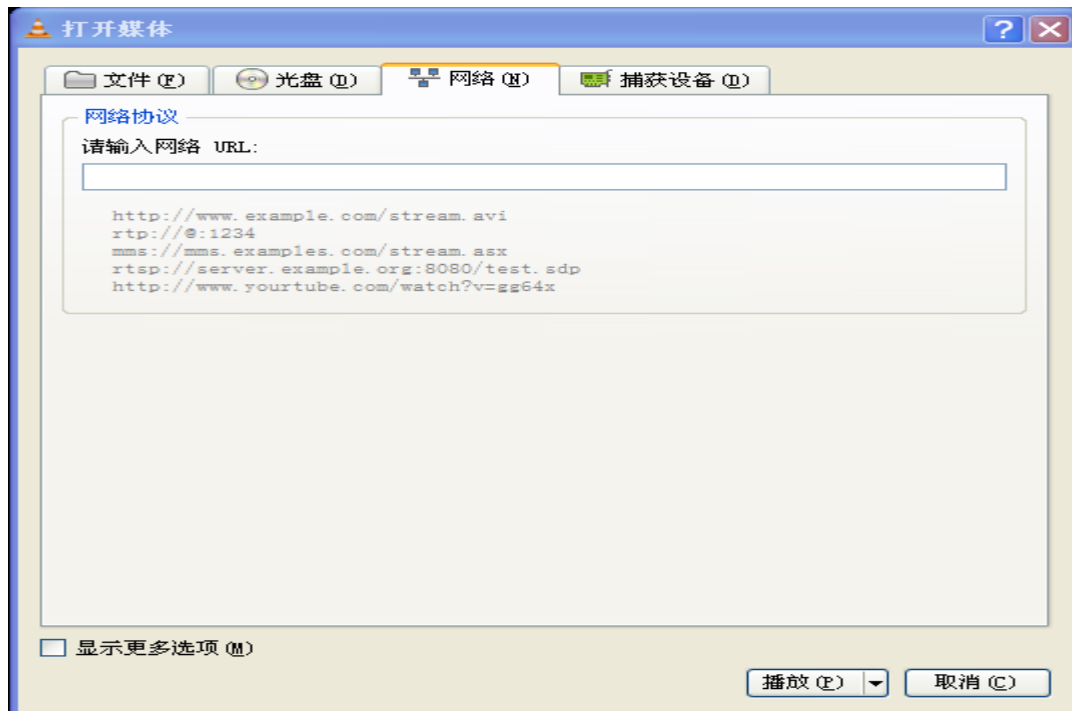
2. Set connecting configuration

Open VLC.EXE



Click "Media", then choose "Network streaming"





Input below information to the box under “please input network URL:”

rtsp://10.6.2.17:554/user=admin&password=&channel=1&stream=0.sdp?

10.6.3.57 -- This is the IP address of the device that to be connected

:554 -- This is the port No. of RTSP service, it can be modified at Network on device.

user=admin -- this is the login user name of device.

password= -- Password is nothing (No password)

channel=1 -- The first Channel

stream=0.sdp? -- Main stream

JF TECH