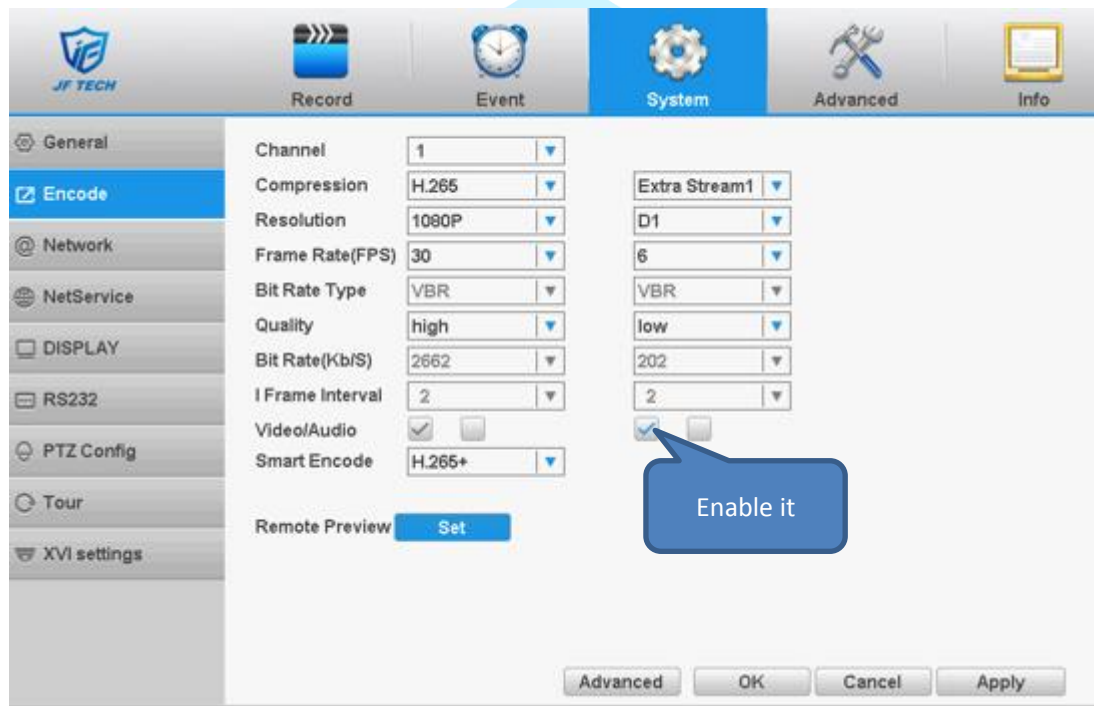


Black screen when in multi-screen

Sometimes when DVR in single preview screen , it will show image, but once switch to multi preview screen , it will turn to black screen .

For this issue , you can check as the below picture ,Main menu – System – Encode .



Because when switch to multi preview screen, it will default use extra stream , so you need to enable Video function in extra stream .

Note : sometimes when you connect NVR with ONVIF IPC , some IPC do not have extra stream function , so when view it in multi preview , it will no image . so you need to check the IPC first .