



Digital Video Recorder Quick Start Guide

Version 1.1.0
JF TECH Co.,Ltd

1 Welcome

Thank you for purchasing our Digital Video Recorder!

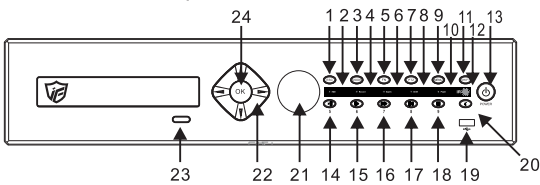
This manual applies to JF DVR and only for simple operation instructions; If you have any needs, please don't hesitate to contact us.

Please keep this user's manual well for future reference!

NOTE: This manual is applicable for JF DVR series(16ch) which also works for other channels.

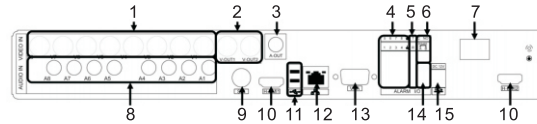
2 Appearance & interface Instructions

2.1 Front-end panel



NO.	Function	NO.	Function	NO.	Function	NO.	Function
1	Exit	2	HDD indicator	3	Mode	4	Record indicator
5	Rec	6	Alarm indicator	7	PTZ Control	8	Shift indicator
9	Menu	10	Power indicator	11	IR Receiver	12	Shift
13	Power Switch	14	Next file	15	Play	16	Fast Play
17	Last file	18	Stop	19	USB interface	20	Null
21	Jog wheel	22	Direction	23	CD-ROM switch	24	OK

2.2 Rear panel



NO.	Function	NO.	Function	NO.	Function
1	video input	6	alarm output	11	USB interface
2	BNC output	7	power switch	12	network port
3	audio output	8	audio input	13	VGA output
4	alarm input	9	SDI input	14	RS485 interface
5	RS232 interface	10	HDMI output	15	DC12V input

3 General Operation

3.1. Boot up/shut down & User login

Step 1: Install HDD

Step 2: Connect to proper power adapter to boot DVR up

Step 3: type in User Name(admin) and Password(default),(Alarm will start if wrong typing for 3 times, DVR account blocked in 5 times, wait half hour or reboot to fix)

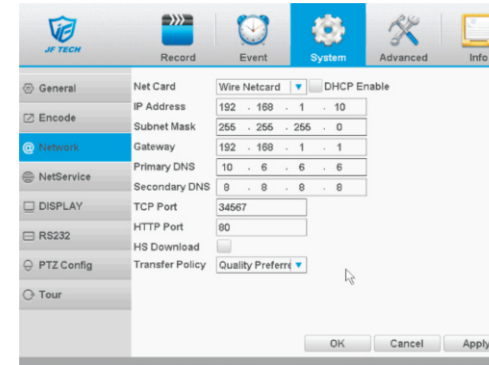
Step 4: Two ways shut down

Soft-off: main menu→shut down system

Hard-off: plug the power on the rear panel

4 Network settings

Go to **【Main Menu】** → **【System】** → **【Network】**



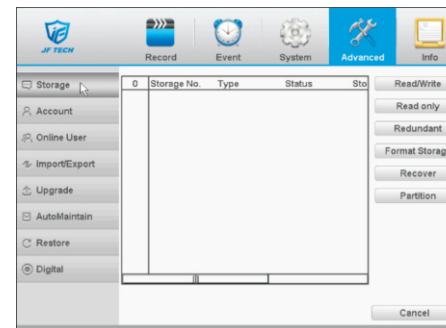
Network	Default
IP Address	192.168.1.10
Subnet Mask	255.255.255.0
Gateway	192.168.1.1

Note: To make sure the IP address of device share the same network segment with the router IP. Go to 【Main menu】 → 【System】 → 【Network】 , Tick “DHCP Enable” to Obtain IP automatically. (Router should enable DHCP).

5 Record settings(HDD necessary)

5.1 HDD management

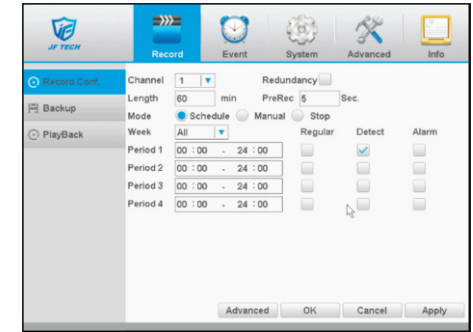
Go to **【Main Menu】** → **【Advanced】** → **【Storage】** to format the HDD. Then set the HDD as read-write.



Note: At least one read-write disk is needed for normal recording.

5.2 Video settings

Go to **【Main Menu】** → **【Record】** → **【Record Conf】**



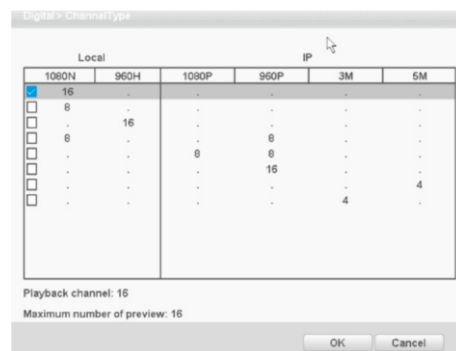
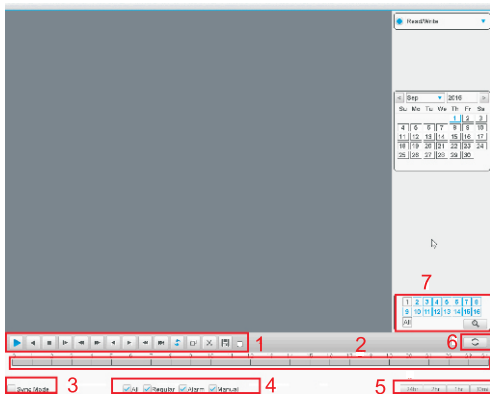
Channel	Corresponding channel number	
Redundancy	Double backup the file	
Length	Video time length: 1min-120min	Default value:60mins
Mode	Schedule	Record according to the set video type (regular, detect, alarm) and time section
	Manual	Corresponding channel starts recording 24 hours non-stop
Period	Stop	Corresponding Channel stops recording no matter the channel in any state
	Time section of common recording	Recording in the set time section
Record type	Regular	Record according to the set time section. The video file type is "R".
	Detection	Trigger the motion detect/video blind/video loss/abnormal analysis within time section. Check it to turn on record detection. The video file type is M.
	Alarm	Trigger the external alarm signal in the set time section. The video file type is "A".

6 Playback

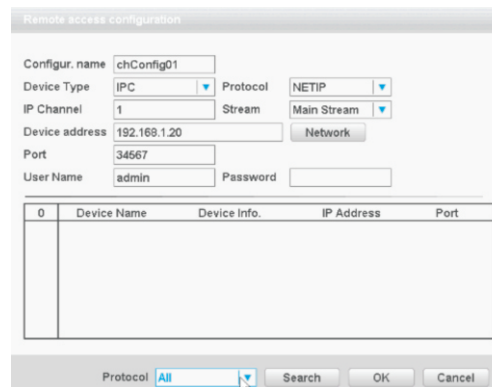
There are two ways for you to play the video files in the HDD

- 1.Right click the short-cut menu
- 2.Go to **【Main Menu】** → **【Record】** → **【Playback】**

Note: The HDD which saves the video files must be set as read-write or read-only state.

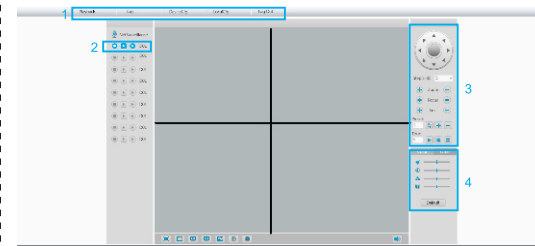


Go to **【Main Menu】** → **【System】** → **【Digital】** → **【Digital Channels】** to add IP camera to digital channels.



Search	Display the IP address within the same LAN, such as IPC, DVR and NVR. Choose one IP address, device name, type, IP address, port and protocol will be entered automatically.
Protocol	Support NETTP,ONVIF and all. Default is all.
OK	Finish adding, go back to digital channel interface, choose added monitoring device to preview.

Note: Not all models support this function

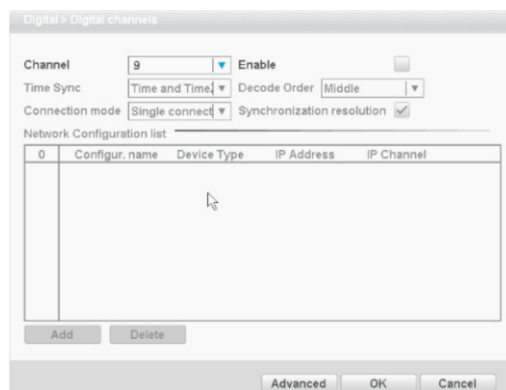


NO.	Function
1	Main Menu
2	StreamSelection
3	PTZ ControlMenu
4	Image Settings

1. Playback control	2. Time display	3. Synchronous
4. Video type	5. Timeschedule options	6. search by time/switchmode
7. TimeAttributes		

7 Channel management

Go to **【Main Menu】** → **【System】** → **【Digital】** → **【Channel Type】** to configure, you can connect IP camera under pure network or hybrid network.



Enable	Effect settings	
Channel	Channel number	
Connection Mode	Single connection	can only connect to one monitoring device
	Multi-connection	can connect to several devices, device will be displayed one by one, tour interval can be set, no less than 10s;
Add	Click it then you will enter next page as below picture shows then you can search and add IPC.	

8 IE Access

Step 1: Open IE and input the modified DVR IP addresses in the address bar.
 Step 2: Install plug-in. IE is default to intercept plug-in. Please set IE security level. Go to **【Internet options】** → **【Security】** → **【Customized level】** → **【ActiveX】**, enable them all. Or go to our official website to download and install plug-ins (<http://www.jftech.com>). Or get it from the CD and install IE plug-in.exe.
 Step 3: Please input your user name and password on the login page(Default user name is admin and password is null). Change the administrator password timely after login.
 Step 4: Click "login". See below chart for more details.

Note:

This quick start guide is for reference only. Slight difference may be found in the user interface.

All the designs and software here are subject to change without prior written notice.

All trademarks and registered trademarks mentioned are the properties of their respective owners.

If there is any uncertainty or controversy, please refer to the final explanation of us.

Please visit our website or contact your local retailer for more information.