



# AHD Camera and PTZ Camera Quick Start Guide

Version 1.1.0  
JF TECH(Co.,Ltd)

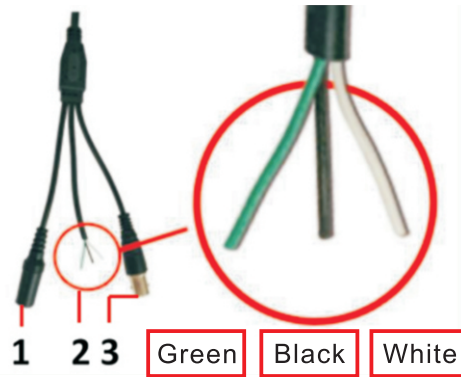
## 1 Welcome

Thank you for purchasing our AHD camera!  
This manual applies to JF AHD cameras and only for simple operation instructions;  
If you have any needs, please don't hesitate to contact us.  
Please keep this user's manual well for future reference!

## 2 Cable Connector Introduction

### 2.1 AHC Camera

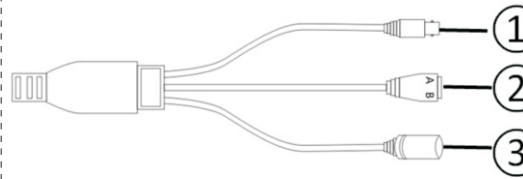
Take the Camera with cable switchable function for example



For the other module with cable switchable function

Line	Video Output
Black, white and green connected	CVBS
Non-short connection	AHD

### 2.2 AHD PTZ camera



No.	Function	No.	Function
1	DC12V input	2	Mode Switch
3	Video Output		

For 4 In 1 series:

Line	Video Output
Black and green Connected	CVI
Black and white Connected	TVI
Black, white and green Connected	CVBS
Non-short Connection	AHD

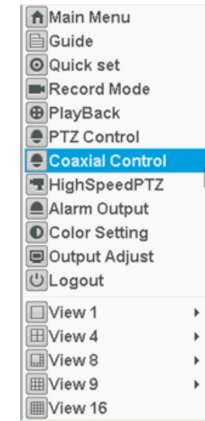
No.	Function	No.	Function
1	Video output	2	RS485
3	DC12V input		

Note: For MA series, coaxial control and RS485 are not both supported, you can only choose one.

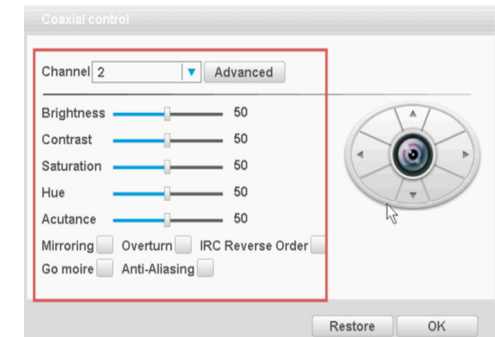
For FA series, coaxial control and RS485 are both supported.

## 3 DVR Operation (For the AHC Camera & AHC PTZ model that has OSD Menu)

(1) Right-click on the main interface of DVR, it will popup menu options, select [Coaxial Control] to enter the Coaxial Control interface.



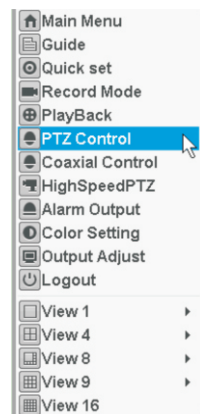
(2) You can adjust the coaxial control. What is in the red box is only for Lite Series (JF-AHC-XX2110 and JF-AHC-XX2120 series).



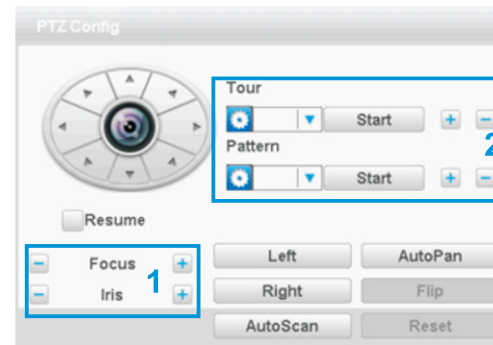
For PTZ camera:

(1) Right-click the main interface of DVR, it will popup menu options,select[Main Menu]>[System]>[PTZ Device] to configure the PTZ;Select the PTZ camera access channel in the channel interface; Address bites default is 1,protocol,baudrate and other configurations can be automatically match PTZ camera;

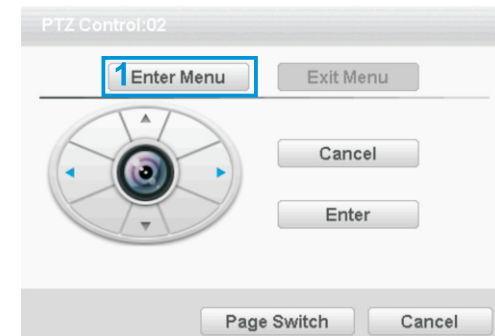
(2) In the main interface,click [PTZ Control] to PTZ control interface.



(4) PTZ's Tour&Pattern&Pan functions

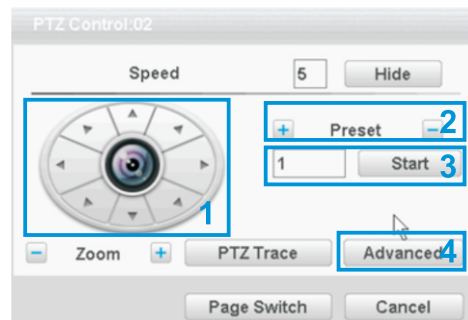


(5) Right-click then you can go back to the PTZ control interface, by clicking the [Page Switch],you can enter different PTZ control interface, by clicking [Enter Menu] on the below interface, you can enter OSD Menu.



1.Enter OSD Menu

(3) PTZ Control Operation



1. Directional pad
2. Add and delete presets
3. Select preset number
4. Click to enter PTZ Config

focus	+	focus near
	-	focus far
Iris	+	get brighter
	-	get darker

1

2.You can set tour and pattern here

**Note:**

This quick start guide is for reference only. Slight difference may be found in the user interface.

All the designs and software here are subject to change without prior written notice.

All trademarks and registered trademarks mentioned are the properties of their respective owners.

If there is any uncertainty or controversy, please refer to the final explanation of us.

Please visit our website or contact your local retailer for more information.

