



Network Video Recorder Quick Start Guide

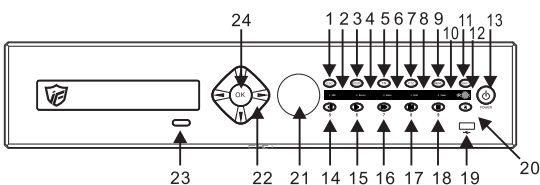
Version 1.1.0
JF TECH Co.,Ltd

1 Welcome

Thank you for purchasing our Network Video Recorder!
This manual applies to JF NVRs and only for simple operation instructions.
If you have any needs, please don't hesitate to contact us.
Please keep this user's manual well for future reference!
NOTE: This manual is applicable for NVR series (16ch) which also works for other channels.

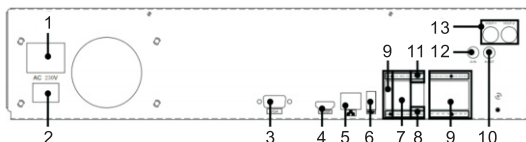
2 Appearance & interface Instructions

2.1 Front-end panel



NO.	Function	NO.	Function	NO.	Function	NO.	Function
1	Exit	2	HDD indicator	3	Mode	4	Record indicator
5	Rec	6	Alarm indicator	7	PTZ Control	8	Shift indicator
9	Menu	10	Power indicator	11	IR Receiver	12	Shift
13	Power Switch	14	Next file	15	Play	16	Fast Play
17	Last file	18	Stop	19	USB interface	20	Null
21	Jog wheel	22	Direction	23	CD-ROM switch	24	OK

2.2 Rear panel

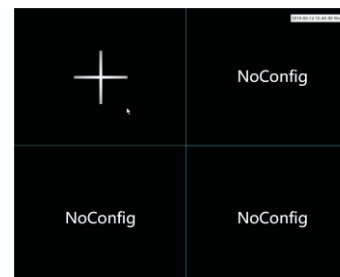


NO.	Function	NO.	Function	NO.	Function
1	AC Input	6	USB interface	11	RS485 interface
2	Power sttch	7	Alarm output	12	Audioinput
3	VGA output	8	Rs232 interface	13	BNC output
4	HDMI output	9	Alarm input		
5	Network port	10	Audio output		

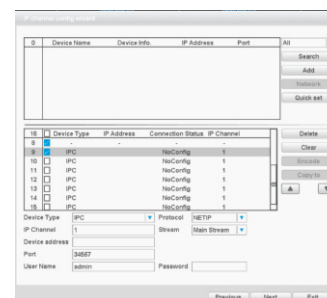
3 General Operation

3.1. Boot up/shut down & User login
Step 1: install HDD
Step 2: Connect to power adapter to boot NVR up
Step 3: type in User Name(admin) and Password(default),(Alarm will start if wrong typing for 3 times, NVR account blocked in 5 times, wait half hour or reboot to fix)
Step 4: Two ways shut down:
Soft-off: main menu → shut down system
Hard-off: plug the power on the rear panel

4 Add Camera



Click “+” on the Live view screen to add camera, interface will be shown below:



5 Network settings

Go to **【Main Menu】** → **【System】** → **【Network】**



Network	Default
IP Address	192.168.1.10
Subnet Mask	255.255.255.0
Gateway	192.168.1.1

【Search】

Search and display the IP address within the same LAN, such as IPC, DVR and NVR. Choose one IP address, device name, type, IP address, port and protocol will be entered automatically.

【IP Channel】

Select channel number to add IP camera.

【Protocol】

Support NETTP, ONVIF and all.

【Add】

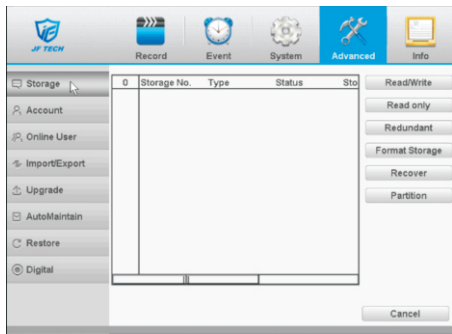
Add camera, camera info will show on the upper table once add successfully.

Note: To make sure the IP address of device share the same network segment with the router IP. Go to **【Main menu】 → **【System】** → **【Network】**, Tick “DHCP Enable” to Obtain IP automatically. (Router should enable DHCP).**

6 Record settings(HDD necessary)

6.1 HDD management

Go to **【Main Menu】** → **【Advanced】** → **【Storage】** to format the HDD. Then set the HDD as read-write.



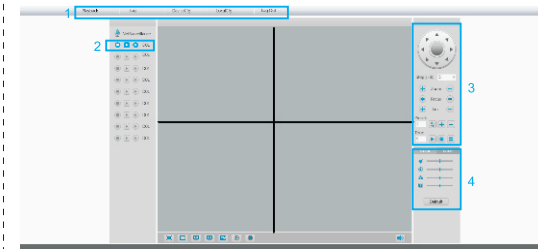
Note: At least one read-write disk is needed for normal recording.

Channel	Corresponding channel number	
Redundancy	Double backup the file	
Length	Video time length: 1min-120min	Default value:60mins
Mode	Schedule	Record according to the set video type (regular, detect, alarm) and time section
	Manual	Corresponding channel starts recording 24 hours non-stop
	Stop	Corresponding Channel stops recording no matter the channel in any state
Period	Time section of common recording	Recording in the set time section
Record type	Regular	Record according to the set time section. The video file type is "R".
	Detection	Trigger the motion detect/video blind/video loss/abnormal analysis within time section. Check it to turn on record detection. The video file type is M.
	Alarm	Trigger the external alarm signal in the set time section. The video file type is "A".

1. Playback control	2. Time display	3. Synchronous
4. Video type	5. Timeschedule options	6. search by time/switchmode
7. TimeAttributes		

8 Channel management

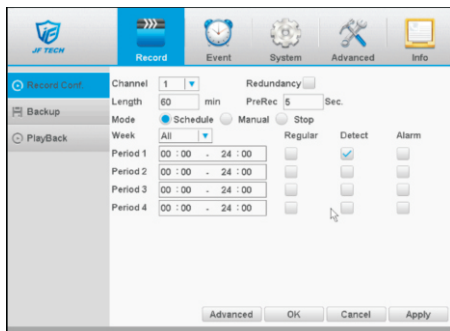
Go to **【Main Menu】** → **【System】** → **【Digital】** **【Channel Type】** to configure, you can connect IP camera under pure network or hybrid network.



NO.	Function
1	Main Menu
2	StreamSelection
3	PTZ ControlMenu
4	Image Settings

6.2 Video settings

Go to **【Main Menu】** → **【Record】** → **【Record Conf】**

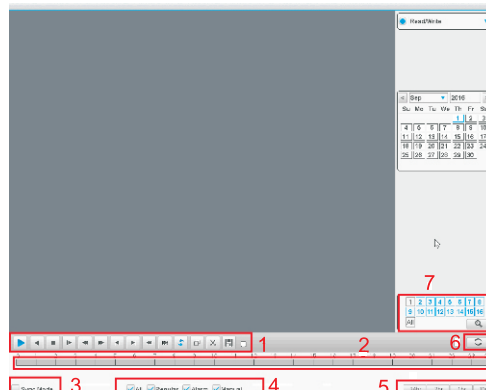


7 Playback

There are two ways for you to play the video files in the HDD

1. Right click the short-cut menu
2. Go to **【Main Menu】** → **【Record】** → **【Playback】**

Note: The HDD which saves the video files must be set as read-write or read-only state.



9 IE Access

- Step 1: Open IE and input the modified NVR IP address in the address bar.
- Step 2: Install plug-in. IE is default to intercept plug-in. Please set IE security level. Go to **【Internet options】** → **【Security】** → **【Customized level】** → **【ActiveX】**, enable them all. Or go to our official website to download and install plug-ins (<http://www.jftech.com>). Or get it from the CD and install IE plug-in.exe.
- Step 3: Please input your user name and password on the login page(Default user name is admin and password is null). Change the administrator password timely after login.
- Step 4: Click "login". See below chart for more details.

Note:

This quick start guide is for reference only. Slight difference may be found in the user interface.

All the designs and software here are subject to change without prior written notice.

All trademarks and registered trademarks mentioned are the properties of their respective owners.

If there is any uncertainty or controversy, please refer to the final explanation of us.

Please visit our website or contact your local retailer for more information.