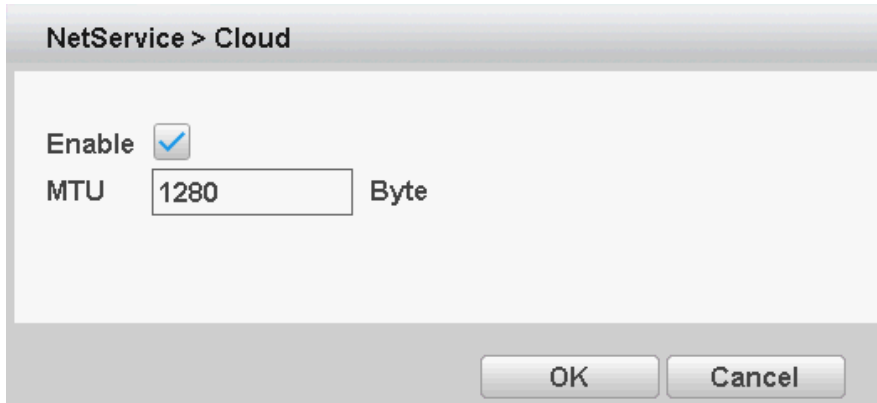

Mail function manual

- 1 The default title is Alarm Message; it may intercept by email system, pls change the email title.
- 2 Go to System->NetService to enable cloud function as below.

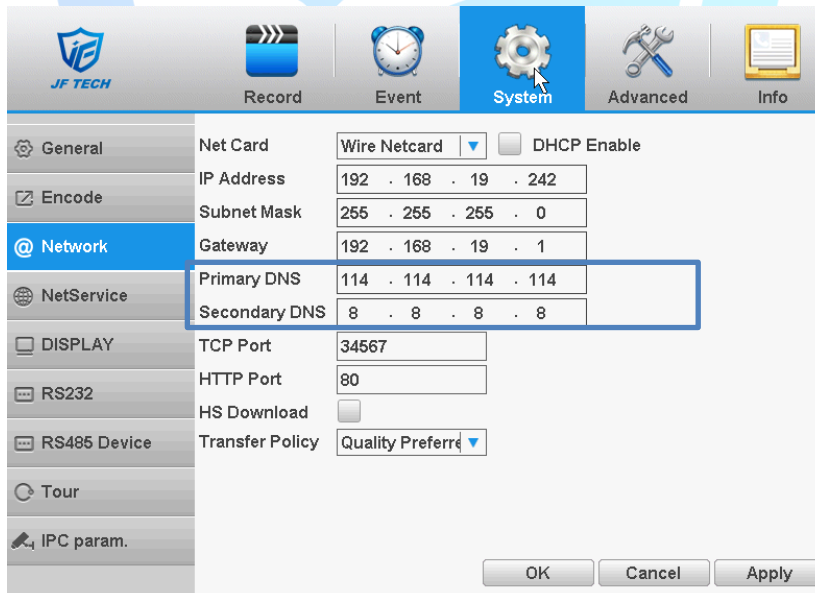


The screenshot shows a configuration window titled "NetService > Cloud". It contains the following fields:

- Enable**: A checked checkbox.
- MTU**: A text input field containing the value "1280".
- Byte**: A label next to the MTU field.

At the bottom of the window are two buttons: "OK" and "Cancel".

- 3 Go to System->Network, set DNS as 114.144.114.114 and 8.8.8.8 as below.



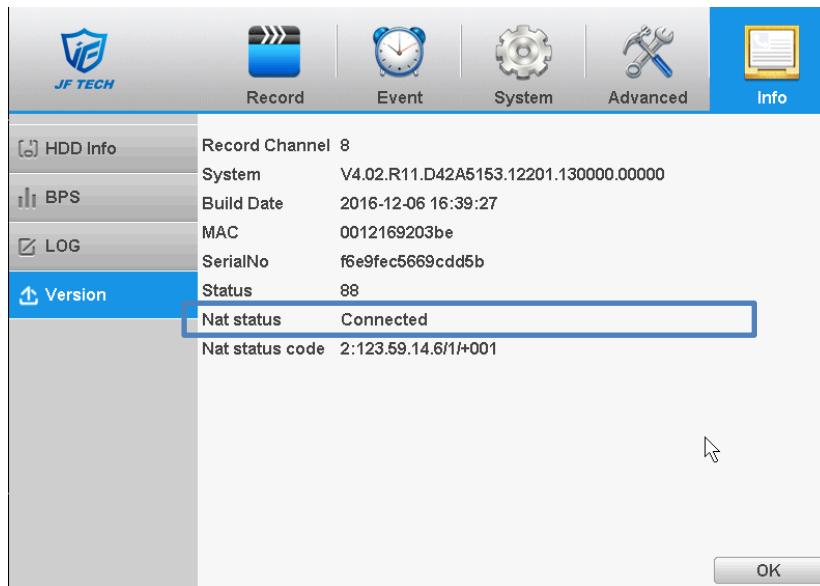
The screenshot shows the "System" configuration page with the "Network" tab selected. The "NetService" section is highlighted, and the DNS settings are as follows:

Field	Value
Net Card	Wire Netcard
DHCP Enable	<input type="checkbox"/>
IP Address	192 . 168 . 19 . 242
Subnet Mask	255 . 255 . 255 . 0
Gateway	192 . 168 . 19 . 1
Primary DNS	114 . 114 . 114 . 114
Secondary DNS	8 . 8 . 8 . 8
TCP Port	34567
HTTP Port	80
HS Download	<input type="checkbox"/>
Transfer Policy	Quality Preferred

At the bottom of the window are three buttons: "OK", "Cancel", and "Apply".

- 4 Go to Info->Version to check if the Nat status of your device is connected.

JF TECH



5 If you want to use Gmail or yahoo, pls enable SSL, port:465.

5.1 Gmail

The SMTP sever of Gmail is smtp.gmail.com

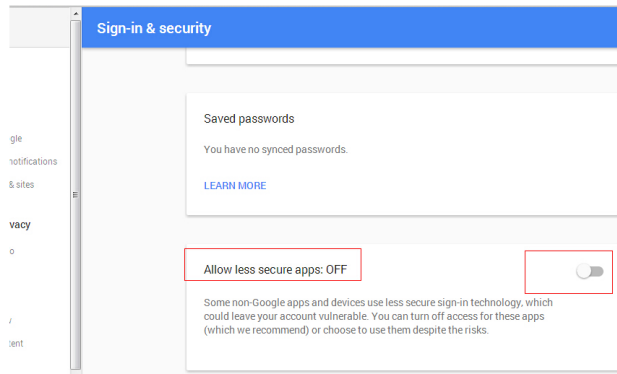
5.2 Yahoo

The SMTP server of Yahoo is smtp.mail.yahoo.com



6 If you want to use Gmail or yahoo, go to Account->Security Setting to enable Allow less secure apps.

6.1 Gmial



6.2 Yahoo



JF TECH