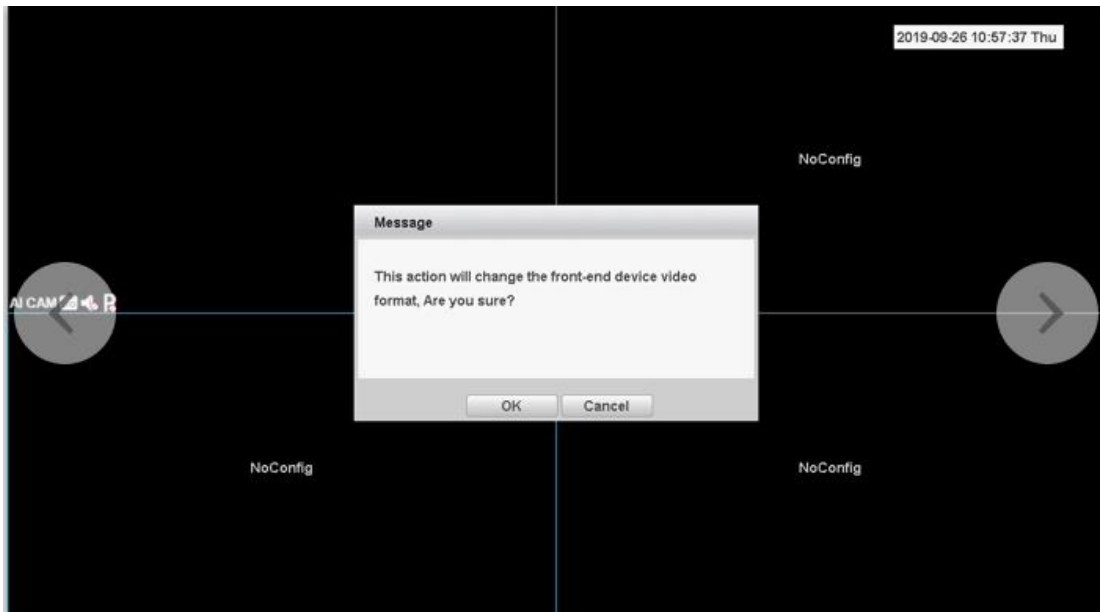


The NVR channel interface displays a letter P or N, what do you mean? How to solve?



If this is the case above . Maybe add equipment, IPC and NVR video format is not consistent .
If it is our IPC, click P or N that can directly switch the IPC standard.

If the camera is connected to other manufacturers, can access the IPC modulation
or you can also modify the NVR video standard, the main menu → System →General

